



4.7 litre glass dish



3in1

NEW! Multi grill ST/WA 3670

NEW! Kneading machine KM 3663

- Sandwich toaster, waffle maker and contact grill
- Versatile use by three different removable plates (sandwich/waffle/grill plates), e.g. for Belgian waffles and tasty sandwich variations, as well as for fast two-sided contact grilling
- Stainless steel insert
- Baking plates non-stick coated and changeable
- Heat insulated handle
- 2 indicator lights for power and heating (baking lights)
- High stability due to rubberized feet
- Locking system
- Overheating protection
- 220–240 V, 50/60 Hz, 800 W
- W x H x D approx. 240 x 105 x 220 cm



Stainless steel insert



Sandwich plates



Waffle plates



Grill plates

- High-performance kneading machine with 800 watt
- 8 speed level (0-1-2-3-4-5-6 + pulse function)
- 4.7 litre glass dish for max. 2.5–3 kg dough preparation
- Aluminium die-cast stirring hook – also enables the uniform mixing of sizeable quantities of dough
- Aluminium die-cast dough hook – for heavy doughs, e.g. yeast or bread dough
- Stainless steel whisk for light sponge cake and fluffy egg whites
- Special robust gear mechanism
- Constant power through load-dependent, electronic speed control
- 35° swivelling multifunction arm
- Unlocking mechanism for multifunction arm
- Safety circuit
- Transparent splash protection lid with refill opening (removable)
- Particularly easy to operate and clean
- High stability due to suction feet
- Quick-action chuck for holding the tools
- 220–240 V, 50/60 Hz, 800 W
- W x H x D approx. 346 x 312 x 284 mm



Art. no. 263 805
EAN 4 006 160 638 059

PU 4



Art. no. 263 803
EAN 4 006 160 638 035

PU 1





Stainless steel

NEW! Automatic juicer
AE 3666

NEW! Hot air fryer
FR 3667 H

3

- Professional automatic juicer in high-quality stainless steel housing
- Fresh fruit and vegetable juices quickly prepared. Rich in vital substances for well-being, fitness and health
- 30 % more juice and vitamins
- Large filler spout (65 mm Ø)
- 3 speed levels (0-1-2) for different fruit hardness
- Pulp container (approx. 1.5 litre capacity)
- Open juice spout
- Drip-stop due to a folding juice spout
- Lock with safety switch
- Stainless steel sieve for finest juices
- Can be completely disassembled – quick and easy cleaning
- High stability
- 220–240 V, 50/60 Hz, 400 W max.
- W x H x D approx. 272 x 295 x 171 mm

- Oil and fat free hot air fryer
- Low smoke or odors
- Time and energy-saving cooking
- Cool touch handle
- Stainless steel inserts
- Capacity: 2.2 litre
- Removable container (non-stick coated) with safety switch
- Continuously adjustable thermostat (80°C–200°C)
- 60 minute timer with shut-off signal
- 2 indicator lights for temperature/operation
- Overheating protection
- 220–240 V, 50/60 Hz, 1500 W
- W x H x D approx. 265 x 335 x 315 mm



Large filler spout
(65 mm Ø)



Drip-stop due to a
folding juice spout



Capacity: 2.2 litre

Art. no. 263 804
EAN 4 006 160 638 042

PU 4



Art. no. 263 797
EAN 4 006 160 637 977

PU 2





4

NEW! Steam cooker DG 3665

- Steam cooker for the healthy cooking of food without burning vitamins
- 3 steam cooker containers, 1 lid, 1 rise bowl
- Semi-transparent water tank (1.5 litre)
- Drip bowl for the collection of juices
- 60 minute timer
- Water level indicator
- Water replenishable during operation
- Easy to clean
- Overheating protection
- 220–240 V, 50 Hz, 800 W
- W x H x D approx. 235 x 400 x 240 mm

NEW! Vertical Doner Multigrill DVG 3664

- Vertical Doner Multigrill for fat-free grilling of chickens, kebab/gyros or meat skewers
- Thanks to its vertical position, escaping jus drips directly into the stainless steel fat tray
- Internal lighting
- Cooking chamber: approx. 21 litre
- Incl. 1 rotary spit for chickens or kebab/gyros
- Incl. 7 meat skewers
- 60 minute timer with end signal
- 2 temperature settings (750/1500 W)
- Indicator light
- 220–240 V, 50/60 Hz, 1500 W
- W x H x D approx. 282 x 446 x 334 mm



1 rotary spit for chickens or kebab/gyros



7 meat skewers



Art. no. 263 802
EAN 4 006 160 638 028

PU 4




Art. no. 271 724
EAN 4 006 160 717 242

PU 1





 Stainless steel



NEW! Stainless steel double hotplate
DKP 3668 E

- Stainless steel housing
- 2 hotplates
 - 1 x Ø approx. 185 mm, 1500 watt
 - 1 x Ø approx. 155 mm, 1000 watt
- 2 continuously variable thermostats
- 2 indicator lights
- Incl. 2 mountable cool touch handles
- High stability
- 230 V, 50 Hz, 2500 W
- W x H x D approx. 590 x 70 x 280 mm (with handles)

NEW! Electric charcoal lighter
EGA 3662

- Electric charcoal lighter for the safe ignition of grilling charcoal and charcoal briquettes
- No chemicals, no smells
- For clean, fast grilling enjoyment
- Minimum smoke level
- Kindled barbecue fire in about 10–20 minutes
- Simple operation
- Large ignition surface with 3 filaments
- Heat-insulated handle inkl. heat shield
- Capacity: approx. 1.5 kg
- Easy to clean
- 230 V, 50 Hz, 600 W
- W x H x D approx. 300 x 275 x 170 mm

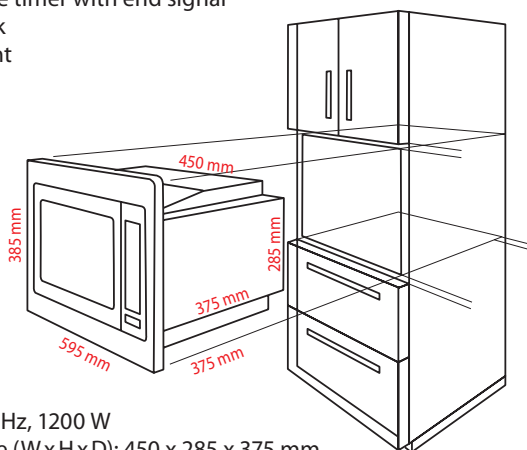


6

NEW! Built-in microwave with grill
MWG 2267 EB

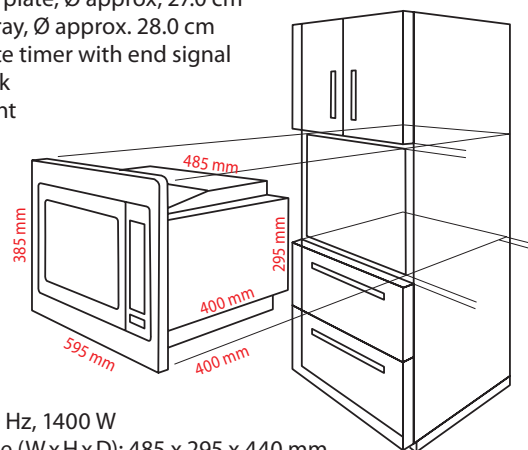
NEW! Built-in microwave with grill
and convection MWG 2269 H EB

- Built-in microwave oven
- Stainless steel front/interior
- LED display
- Digital clock
- 800 watt microwave
- 1000 watt grill
- 6 microwave power level
- 2 level in combined operation (microwave/grill/convection)
- 1 grill level
- 9 automatic programs
- Defrost program
- Quick-start program
- 20 litre capacity
- Rotating plate, Ø approx. 24.5 cm
- Grill rack, Ø approx. 20.0 cm
- 95 minute timer with end signal
- Child lock
- Oven light



- 230 V, 50 Hz, 1200 W
- Appliance (W x H x D): 450 x 285 x 375 mm
- Appliance with frame (W x H x D): 595 x 385 x 375 mm
- Weight: approx. 14.5 kg

- Built-in microwave oven
- Stainless steel front/interior
- LCD display
- Digital clock
- 900 watt microwave
- 1950 watt grill
- 1950 watt convection
- 6 microwave power levels
- 3 levels in combined operation (microwave/grill/convection)
- 1 grill level
- 10 temperature settings for convection (110 °C–200 °C)
- 13 automatic programs
- Defrost program
- Quick-start program
- 25 litre capacity
- Rotating plate, Ø approx. 27.0 cm
- Baking tray, Ø approx. 28.0 cm
- 90 minute timer with end signal
- Child lock
- Oven light



- 230 V, 50 Hz, 1400 W
- Appliance (W x H x D): 485 x 295 x 440 mm
- Appliance with frame (W x H x D): 595 x 385 x 440 mm
- Weight: approx. 17.5 kg



Art. no. 622 671
EAN 4 004 470 226 713

PU 1



Art. no. 622 691
EAN 4 004 470 226 911

PU 1

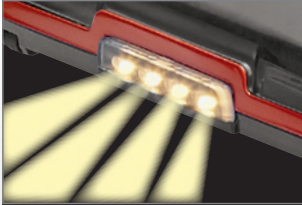




Incl. electrically rotating turbo floor brush



2-fold accessories:
combined brush/crevice nozzle



LED front light for better illumination
of dark areas



Incl. flexible brush for corners and
edges

2in1

**Powerful
Lithium-ion battery
21.6 V / 2200 mAh**



NEW! **Battery floor vacuum cleaner**
BS 1307 A

- Accu-hand and floor vacuum cleaner, for flexible and individual operations as brush-/hand vacuum cleaner
- Bagless Cyclon Twin Spin technique allows continual high suction power
- Bagless filter technology
- Powerful lithium-ion battery 21,6 V, 2200 mAh accu
- Running time approx. 30 min
- 2 suction levels (turbo function electrically switchable)
- LED battery charge condition indicator (illuminated)
- Cable free (for flexible use)
- HEPA-Filter
- Aluminium suction tube
- Easy to clean
- Low weight
- Charging station suitable for wall mounting (incl. mounting material)
- Incl. electrically rotating turbo floor brush with LED front light for better illumination of dark areas
- Incl. flexible brush for corners and edges
- Accessories: aluminium suction tube, wall mount, special brush, combined brush/crevice nozzle
- Charger mains adapter: 230–240 V, 50 Hz
- Rechargeable lithium-ion battery: 21,6 V, 2200 mAh
- W x H x D approx. 200 x 1050 x 260 mm (with suction tube)



**2in1****3in1**

NEW! Facial sauna
GS 3656

- Facial sauna for cosmetic face care and inhalation
- Cosmetic face care with facial sauna attachment – pores are opened for easier cleaning, supplies the skin with rich hydration and stimulates blood circulation
- Incl. exchangeable inhaler for inhaling through mouth and nose
- Relaxation for mind and soul with the aroma attachment – healthy inhalation, e.g. with specific application of essential oils
- Indicator light
- 3-position switch (0-1-2) for correct steam dosage
- Accessories: inhaler, aroma cap and measuring cup for easy filling
- 220–240 V, 50 Hz, 130 W
- W x H x D approx. 215 x 250 x 200 mm

NEW! Facial cleaner and massager
GM 3669

- 3 in 1 – cleaning, massage, and care
- Brush head for thorough deep cleaning – prevents tired complexion and skin impurities
- Attachment for facial massage – eliminates tension, reduces wrinkles, and improves blood circulation
- Attachment for care products – for application of day/night cremes or cleansing milk
- 2 speed levels
- Small and handy, ideal also for traveling
- Ergonomically shaped handle
- No injuries in case of direct skin contact
- Battery operation: 2 x 1.5 V AA (not included)
- W x H x D approx. 60 x 185 x 55 mm



Inhaler for mouth
and nose



Aroma attachment



Measuring cup



Attachments for cleaning, massage and care



NEW! Lady shaver
LS 3658

- Accumulator-operated
- Ergonomic housing with on/off switch
- Easy handling
- Thorough and gentle shave of legs or even more sensible body parts such as, e.g. the armpits or the bikini line
- High-grade steel shaving head with a fine shaving foil for a perfect shave
- Splash-proof (IPX4)
- Incl. 2 long-hair trimmers and removable long-hair attachment
- Charging station with rubberized feet for stability
- LED charging indicator
- Removable shaving head for an easy cleaning, cleanable under running water
- Accessories: charging station/stand, long-hair trimmer, cleaning brush, power supply charger
- Accumulator-operated: 1x 1.2 V / 600 mAh
- W x H x D approx. 56 x 43 x 133 mm

NEW! Nail care system
NPS 3657

- Nail care system for natural-looking, shiny nails
- Filing, smoothing and polishing – just three steps to perfectly manicured nails
- Easy-to-use on toes and fingernails
- Ergonomic housing with on/off switch
- 2 speed levels
- Accessories: 5 attachments (2x polish, 2x smooth, 1x file), cap
- Battery operation: 2 x 1.5 V AA (not included)
- W x H x D approx. 38 x 33 x 135 mm



Promotional packaging



5 attachments (2x polish, 2x smooth, 1x file)

Art. no. 263 798
EAN 4 006 160 637 984 PU 6
Art. no. 263 799
EAN 4 006 160 637 991 PU 6



Art. no. 263 791
EAN 4 006 160 637 915 PU 6
Art. no. 263 793
EAN 4 006 160 637 939 PU 6





Ion technology function

10

NEW! Hair straightener HC 3660

- Ideal for fashionable hairstyles
- Ceramic plates, long life and scratchproof, for uniform, gentle heat distribution
- Additional tourmaline coating provides ionising function – easier styling thanks to anti-static effect, the hair becomes sleek and silky
- Straightens the hair without problems due to the prolonged constant temperature
- Short heating period
- LED indicator light
- Safety interlock
- Handy design
- On/off switch
- Heat resistant power cord
- Cable attached via 360° turnable joint
- Hanging loop
- 220–240 V, 50/60 Hz, 25–30 W
- W x H x D approx. 310 x 30 x 34 mm



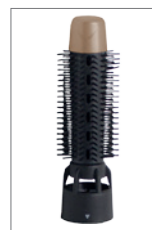
LED indicator light

NEW! Hot air styler HAS 3659

- Hot air styler for even and gentle heat distribution
- 3 exchangeable brush attachments with smooth bristles for hair gentle styling:
 - 1 volume styler
 - 2 round brushes individual for all hair length and requirements (15 mm Ø and 25 mm Ø)
- 2 temperature-/power settings
- Cold setting for style fix and hairstyle finish
- Ergonomic design handle
- Cable attached via 360° turnable joint
- Overheating protection
- Hanging loop
- 230 V, 50/60 Hz, 600 W
- W x H x D approx. 365 x 50 x 50 mm



Volume styler

1 round brush
(15 mm Ø)1 round brush
(25 mm Ø)

Art. no. 263 801
EAN 4 006 160 638 011

PU 6



Art. no. 263 800
EAN 4 006 160 638 004

PU 6





Ion technology function

NEW! Hair dryer
HT 3661

11

- Powerful 2200 watt max.
- Ionizing function – improved possibilities of hairstyling thanks to antistatic effect, the hair is not dried out and becomes smooth and shiny
- 3 temperature/power settings
- 2 speed settings
- Cool shot
- Removable shaped nozzle, rotatable through 360°
- Air inlet filter (removable)
- Overheating protection
- Hanging loop
- 220–240 V, 50/60 Hz, 1800–2200 W
- WxHxD approx. 230 x 270 x 85 mm





Headquarter



Logistic Center (approx. 60.000 m²)



Showroom



Quality assurance



CTC Clatronic Int. GmbH
 Industriering Ost 40
 D-47906 Kempen
 Phone +49 (0) 21 52/20 06-0
 Fax +49 (0) 21 52/20 06-19 99
 info@clatronic.de
 www.clatronic.com

CTC Clatronic Sp. z o. o.
 Ul. Opolska 1a, Karczów
 PL-49-120 Dąbrowa
 Phone +48 (0) 77/44 77 900
 Fax +48 (0) 77/44 77 943
 clatronic@clatronic.pl
 www.clatronic.pl

CLATRONIC Far East Ltd.
 Unit 1045, 47, 49, 49A, 10/F, KITEC
 1 Trademart Drive,
 Kowloon Bay
 Kowloon, Hong Kong
 info@clatronic.com.hk
 www.clatronic.com.hk